

MIL. SPEC. THIMBLE

316 STAINLESS STEEL



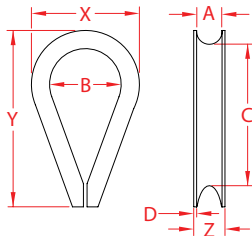
Import



Stamped



Suncor
Exclusive



| ITEM | A (size) | B | C | D | X (height) | Y (length) | Z (width) | WT (lb) | PACKAGING TYPE | EACH (qty) | INNER (qty) | CARTON (qty) | UPC |
|------------|-------------|-------|-------|-------|---------------|---------------|--------------|------------|-------------------|---------------|----------------|-----------------|--------------|
| S0124-AN01 | 3/32" | 0.35" | 0.70" | 0.03" | 0.55" | 0.96" | 0.18" | 0.15/100 | POLYBAG | 1 | 50 | 2,000 | 791506032045 |
| S0124-AN03 | 1/8" | 0.35" | 0.70" | 0.03" | 0.56" | 1.00" | 0.22" | 0.43/100 | POLYBAG | 1 | 50 | 1,000 | 791506032052 |
| S0124-AN04 | 5/32" | 0.40" | 0.80" | 0.03" | 0.64" | 1.11" | 0.27" | 0.60/100 | POLYBAG | 1 | 10 | 500 | 791506032069 |
| S0124-AN05 | 3/16" | 0.50" | 1.00" | 0.03" | 0.77" | 1.44" | 0.29" | 0.98/100 | POLYBAG | 1 | 50 | 500 | 791506032076 |
| S0124-AN07 | 1/4" | 0.70" | 1.40" | 0.03" | 1.06" | 2.00" | 0.31" | 0.02 | POLYBAG | 1 | 10 | 500 | 791506032083 |
| S0124-AN08 | 5/16" | 0.90" | 1.80" | 0.04" | 1.31" | 2.52" | 0.42" | 0.04 | POLYBAG | 1 | 10 | 500 | 791506032090 |
| S0124-AN10 | 3/8" | 1.00" | 2.00" | 0.06" | 1.57" | 2.88" | 0.56" | 0.09 | POLYBAG | 1 | 10 | 300 | 791506032106 |
| S0124-AN12 | 7/16" | 1.13" | 2.25" | 0.08" | 1.81" | 3.41" | 0.61" | 0.12 | POLYBAG | 1 | 10 | 200 | 791506032113 |
| S0124-AN13 | 1/2" | 1.25" | 2.50" | 0.08" | 2.06" | 3.97" | 0.72" | 0.21 | POLYBAG | 1 | 10 | 100 | 791506032120 |

NOTE:
MEETS MIL SPEC AN100 (AIR FORCE/NAVY).
ALL DIMENSIONS ARE NOMINAL (+/- 3%) AND ARE SUBJECT TO CHANGE WITHOUT NOTICE.